

# Getting off to a perfect start with your studies at OTH AW

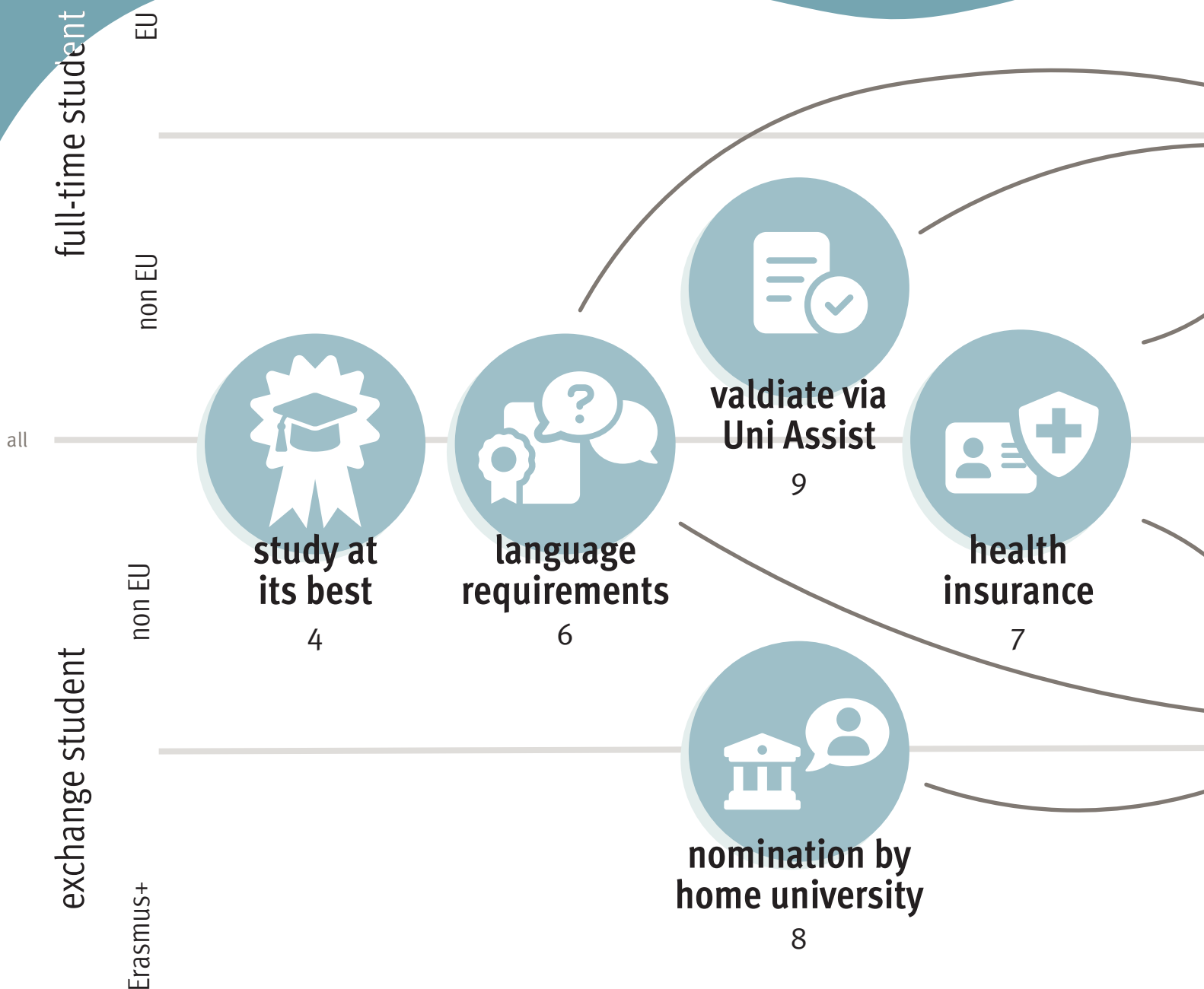
Welcome guide for international students



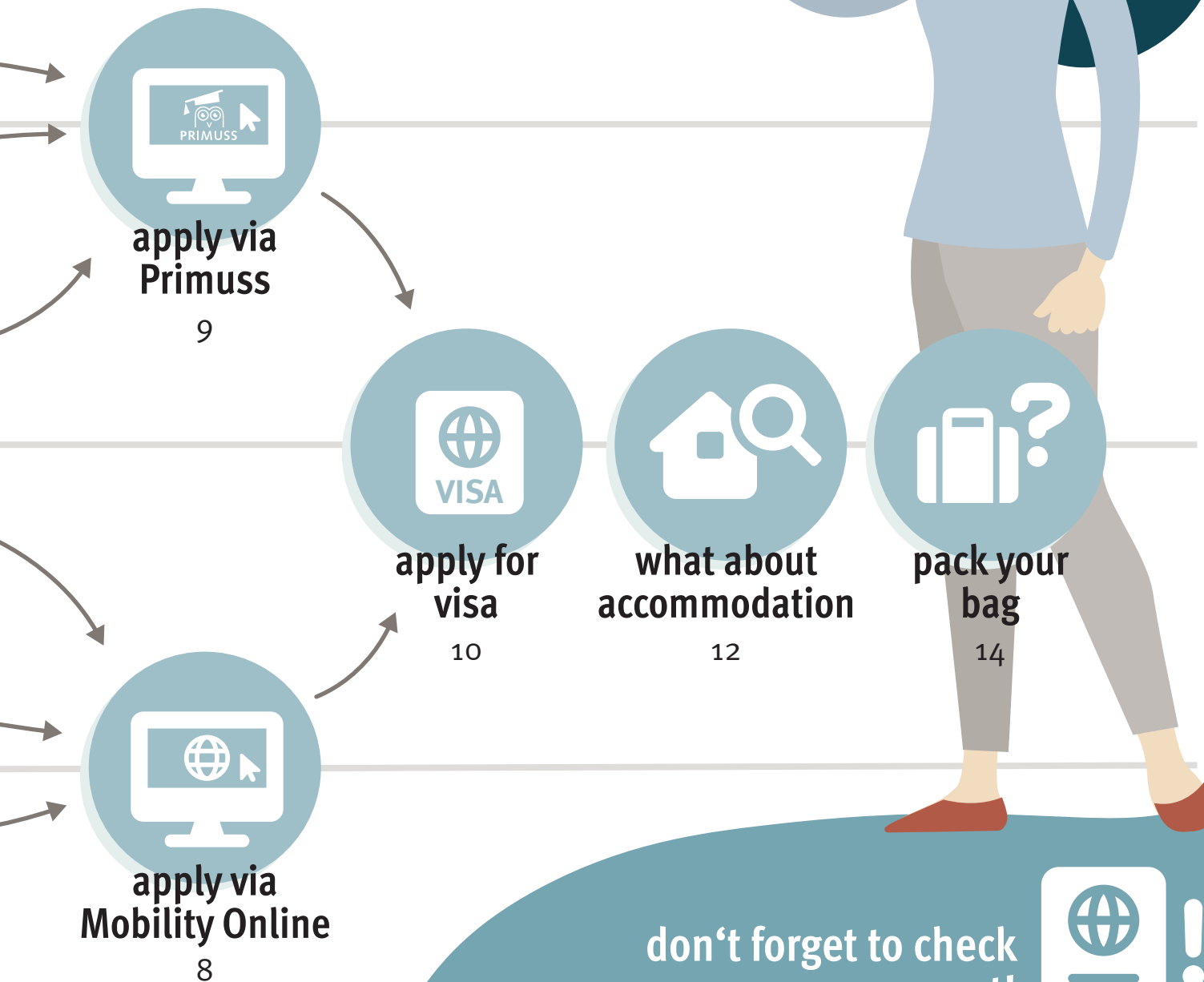
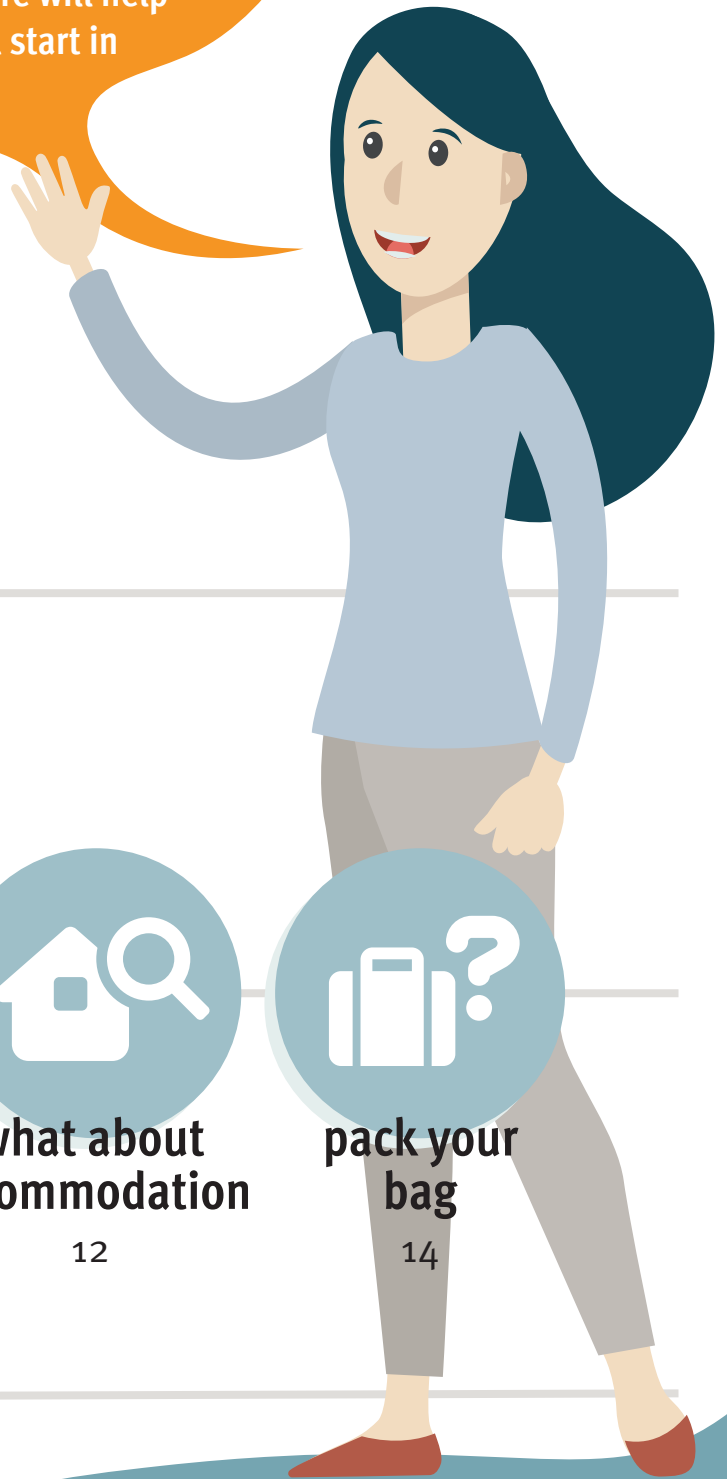
# Flowchart of Content

Welcome to students from all over the world. We are delighted that you chose the Technical University of Applied Sciences OTH Amberg-Weiden as your temporary home and are looking forward to showing you around our beautiful campuses.

But every journey starts small and there are some important steps to take even before arriving in Germany. If you have any further questions do not hesitate to ask the friendly team of our International Office. They will be more than happy to help you.



Studying abroad is about more than just gaining knowledge. It's about getting out of your comfort zone, meeting new cultures and new people and broadening your horizon. This brochure will help you take all the steps for a successful start in this exciting chapter.



don't forget to check your passport!



Your passport must be valid for at least 3 months after the **time of your departure** from Germany or the Schengen area. Also check for enough free pages for the visa.



Both cities are located about 40 kilometers apart. So depending on your field of study please keep in mind which city-campus you will study at when it comes to arrival, accommodation and - in the case of an exchange - the selected modules for your learning agreement.

**Choose** from a number of bachelor programs such as Artificial Intelligence, Digital Business, Patent Engineering, Medical Technology, Geoinformatics & Land Management, Motorsport Engineering, Media Technology & Production, or Energy Efficiency, to name a few.

Amberg

	MBUT Mechanical Engineering and Environmental Technology	EMI Electrical Engineering, Media and Computer Science
students	1000	900
professors and lecturers	30 + 26	27 + 20
employees	59	56
laboratories	27	
bachelor degree programs	6	7
master degree programs	4	4

# Your campus to study at its best

OTH Amberg-Weiden combines cutting-edge study programs with the feel@home atmosphere reserved for small, exquisite schools.

The Ostbayerische Technische Hochschule Amberg-Weiden (OTH AW) is a young, up-and-coming, innovative university of applied sciences in the heart of eastern Bavaria. With our two campuses in Amberg and Weiden we provide first-class higher education in a region outside the major urban centers.

**Boost** your career by benefiting from our close ties to industry partners, extra-curricular courses, excursions, and company visits.

**Enjoy** our extra-curricular activities, university sports programs and field trips as well as the vibrant campus life.

Weiden

## WEBIS Weiden Business School

900

18 + 65

8

22

5

5

## WIG Industrial Engineering and Health

700

20 + 23

45

17

5

3

5

# Language Requirements

International students benefit from language and preparation courses, counselling programmes and events offered as part of the DAAD Funding Programmes “Welcome” and “Integra”, which help you settle in – during your studies and beyond.



Language skills are crucial to studying successfully. Depending on the language in which the modules are taught, the requirements differ.

The language for most degree programs is German and requires German language skills at the level B2 for full-time students and B1 for exchange students.

If you want to study in an English-taught program language level of B2 English and A2 German is required for admission.

For study programs which are taught in both languages, German and English language skills at the B2 level must be provided.



**B2**   
full-time students

**B1**   
exchange students

**B2**  **A2** 

**B2**  **B2** 

## taught in English or hybrid programs



### Bachelor degree programs:

- International Business
- Digital Technology & Management

### Master degree programs:

- International Management & Sustainability
- Global Research in Sustainable Engineering
- International Energy Engineering

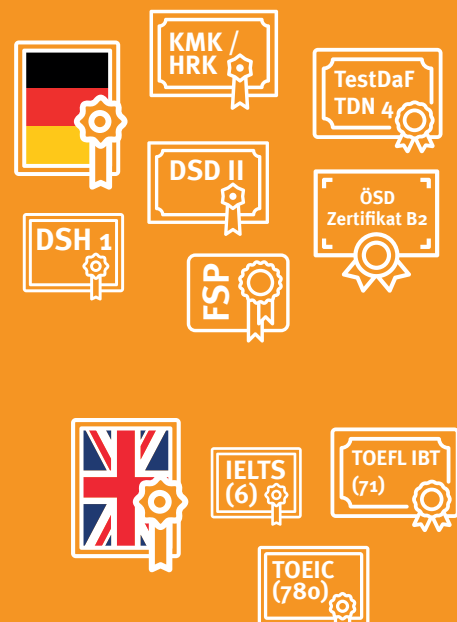


### Bachelor degree programs:

- Artificial Intelligence International

## all common certificates are accepted

(list not complete)



# Health Insurance

All students who begin studies for a specialist degree at a German college or university must have health insurance coverage. No enrolment can take place without a proof of health insurance coverage.

If you want to learn more about the German health insurance system, the Krankenkassenzentrale provides detailed information:



<https://www.krankenkassen-zentrale.de/wiki/international#>

**Start here**



Are you aged under 30 years?

Yes

No

Do you have a private insurance?

Yes

No

Are you from an EEA country, Switzerland or a country that has signed a social security agreement with Germany<sup>1</sup>

Yes

Bring a confirmation from your health insurance company. Services and medications are **not covered by the German health insurance system** and have to be billed directly to your own health insurance company.

From the age of 30, students in Germany no longer have statutory coverage and must take out **private insurance**.

Do you have statutory insurance in your home country?

No, I have private insurance

You will have to take either **statutory or private health insurance** in Germany during your stay.

Yes

No

Your insurance is also valid in **Germany**. Bring a European Health Insurance Card that is valid for the duration of your stay.

Ranking of the 5 best statutory health insurance companies:



<https://www.krankenkassen-zentrale.de/wiki/krankenkasse-studenten#liste>

More information for private student insurance:



<https://www.krankenkassen-zentrale.de/wiki/private-krankenversicherung-studenten>

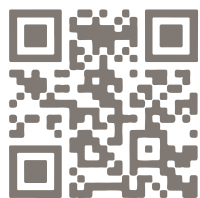
<sup>1</sup> Countries that have signed a social security agreement with Germany: Bosnia-Herzegovina, French overseas territories (French Guiana, Guadeloupe, Martinique, Mayotte, Reunion), Israel<sup>3</sup>, Croatia, Morocco, Macedonia, Montenegro, Serbia, Turkey and Tunisia

# Application for exchange students

## 1. get nominated by home university

International Office of your home university, who will nominate you for an exchange semester with us and start the application process. We will not accept applications directly from students.

Your first step to an exchange semester at OTH Amberg-Weiden starts at home. Contact the



For detailed information, watch the video tutorial created by the International Office:

<http://youtu.be/MC3zMerkPnk>

## 2. apply via Mobility Online

After your home university nominated you, you will receive a registration e-mail with a direct link to Mobility Online. This platform will not only show you all the steps you have to complete, but also guide you through the entire cycle of your studies abroad and provides important information before, during and after your stay at OTH Amberg-Weiden.

After your home university nominated you, you will receive a registration e-mail with a direct link to Mobility Online. This platform will not only show you all the steps you have to complete, but also guide you through the entire cycle of your studies abroad and provides important information before, during and after your stay at OTH Amberg-Weiden.

## 3. learning agreement

The learning agreement ensures that the learning outcomes achieved abroad are recognized by your home university. When you choose your modules, please keep in mind which campus you are placed at and that the courses offered vary from winter to summer semester.

In addition to the regular academic programs, students can choose from a variety of extra-curricular courses and activities to sharpen their skills and broaden their minds.

These include language courses, sports activities or practical projects, which are presented by the supervising professors at the beginning of the semester.

A normal semester load usually consists of 30 ECTS credits per semester.





# Application full-time students

1.

## Uni-Assist

If you wish to study in Germany, you need a university entrance qualification, called “Hochschulzugangsberechtigung” or “HZB” for short. Uni-Assist is a non-profit organization supported by around 180 universities in Germany for the preliminary examination of international student applications. To start your application simply follow the link on the right and choose “OTH Amberg-Weiden” as Hochschule or University. Depending on whether you plan to attend a bachelor's or master's degree program, choose the applicable option. You do not have to commit to a specific program at this point.



2.



## apply via Primuss

Primuss is the central operating and campus management system of the OTH AW. Primuss not only processes your application but also your exam registration, re-registration as well as internship matters. On Primuss, you will find notifications such as the immatriculation certificate or the parking permit.

If you receive an admission, you must declare your acceptance of the study place within a period of time stated in the notification of admission (via the online application portal of OTH AW). Failure to meet this deadline will invalidate the approval!

Please note that in some degree programs a proof of practical training or pre-internship must be provided until end of the second semester.



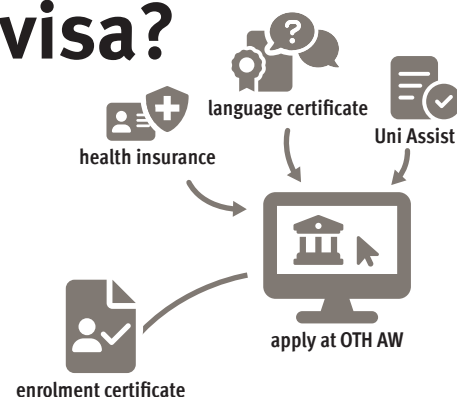
[https://www3.primuss.de/cgi-bin/-bew\\_anmeldung\\_v2/index.pl](https://www3.primuss.de/cgi-bin/-bew_anmeldung_v2/index.pl)

# Visa & Immigration

If you come from a country outside the European Economic Area (EEA), then applying for a student visa at the German Embassy in your home country is the first step you will need to take before coming to Germany.

The duration of your visa application can vary from 4 weeks up to 3 month if the approval of the foreigners authority is necessary before a visa can be issued – in some cases longer, since the foreigners authority will often consult other authorities (e.g. the Federal Employment Agency). Therefore, it's important to submit your visa application **as soon as you have received** your **enrolment certificate** (full-time student) or your **letter of acceptance** (exchange student).

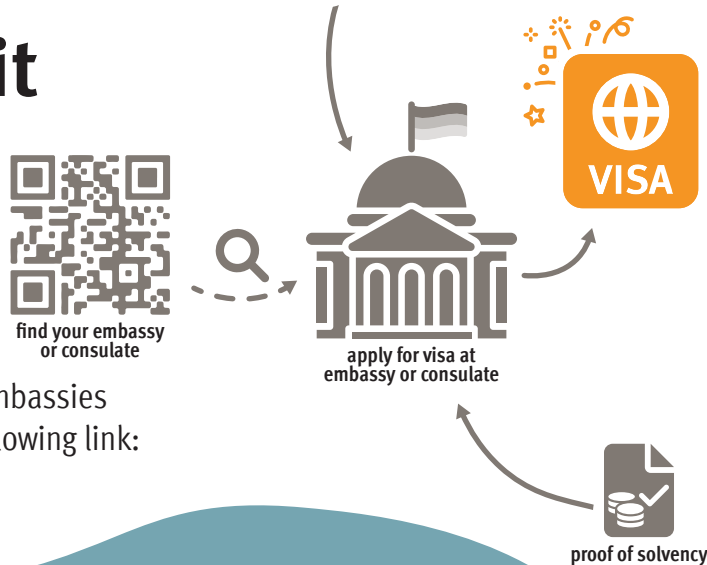
## When should I start to apply for a visa?



## Where should I submit my visa application?

Apply for a visa at the German embassy or consulate general in your country of residence. Also check the embassy or consulate for additional requirements in your country and book an appointment.

Find contact information for your responsible German embassies and consulates using the QR-Code on the right or the following link: <https://www.diplo.de/addresses>



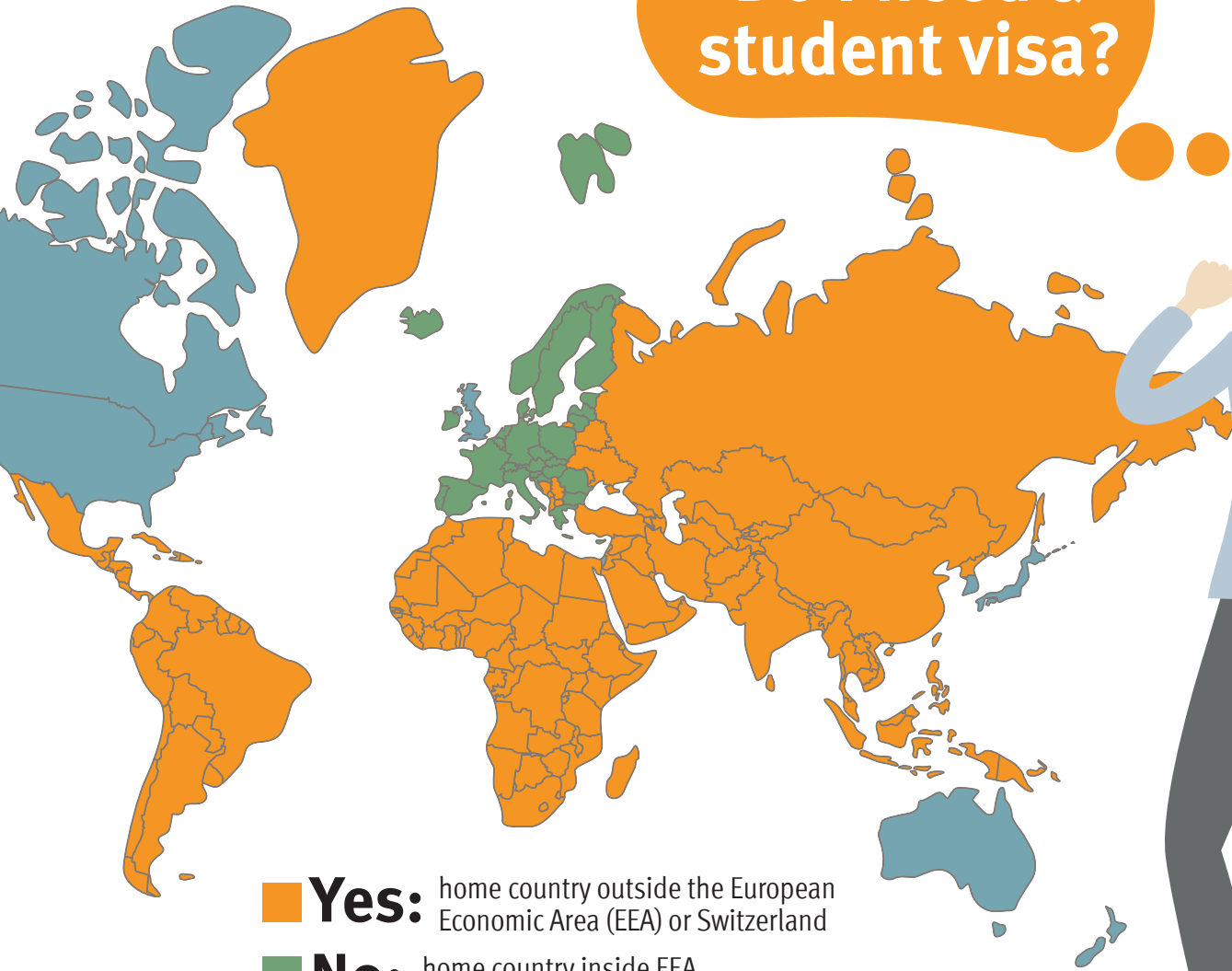
## Proof of financial resources

Before you begin your studies, you will have to prove that you have enough money to support yourself. The document you need is called a **“Finanzierungsnachweis”**, or proof of financial resources. You will be asked for it when you apply for a visa. At the latest, you will need to present it when you apply for a residence permit in Germany. As of January 1, 2021, the assumed annual standard requirement that must be paid into the **blocked account** when applying for a visa is **10,332 €**. For more and **binding** information, contact the German embassy or German consulate in your home country!

10,332 €



# Do I need a student visa?



- Yes:** home country outside the European Economic Area (EEA) or Switzerland
- No:** home country inside EEA or Switzerland
- No, but:** Citizens from Australia, Great Britain, Israel, Japan, Canada, New Zealand, South Korea and the United States of America may apply for a residence permit after coming to Germany.

## Different types of visa

### student visa:

The long stay visa is the visa that you will need to apply for in order to study in German as either a full degree or an exchange student.



### Short stay or tourist visa:

Never enter Germany on a short stay or tourist visa if you intend to stay longer than 90 days. The short stay visa is also known as a 'tourist visa' and is valid for a period of up to 90 days.

If you are coming to Germany to study, this type of visa will not be acceptable and you may have to return to your home country before completing your studies.

It is almost never possible to apply for a long stay visa after entering Germany on a short stay visa without returning to your home country first.



# Start here

**Are you an exchange student for only one semester?**

**Yes!**

**You got lucky!**

We reserve a certain amount of apartments in the student dormitories for international exchange students. You will receive a link for accommodation registration after your letter of acceptance.

**No, I'm an full time student.**

**Don't panic!  
We wrote this page just for you.**

For full time students we can not reserve any apartments as you have to apply for these like every other non-international student.

Luckily, Amberg is not Munich and finding accommodation is way easier than in the big cities. Read this page carefully and if you have any problems, the International Office will be happy to help you.

**1.**

**Apply for student dormitories at Studentenwerk Oberfranken**

Make sure to pick the right place, either Amberg or Weiden. Even if you don't get a place right away, you are on the waiting list and might receive a room later on.



<https://www.studentenwerk-oberfranken.de/wohnen/wohnheimbewerbung/wohnheimantrag.html>

**2.**

**Check the classified ads list**

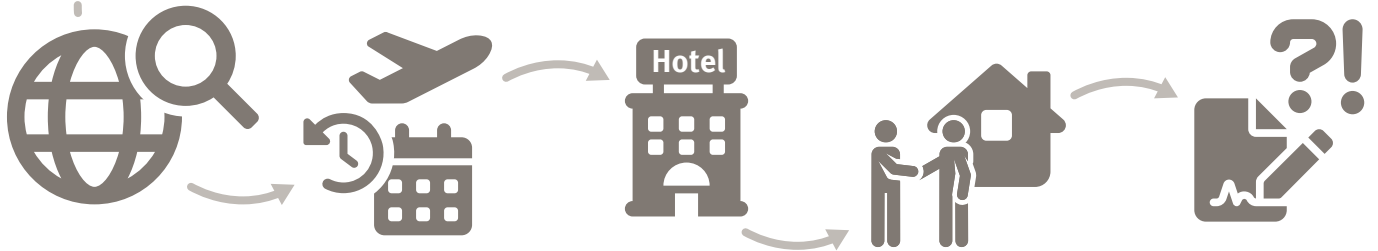
OTH AW provides you with a public housing exchange platform on its website. Private student dorms are listed here, as well as individual apartments from private providers.



<https://www.oth-aw.de/studieren-und-leben/campusleben/marktplatz/wohnungen/>

# Searching for accommodation

never pay money in advance!



We recommend starting the housing search before your arrival in Germany. Although some landlords would like you to sign a contract in advance to ensure the availability of your student room, it is usually not advisable to sign a contract or transfer any amount of money without meeting the landlord and viewing the property in person or having someone you trust view the property on your behalf.

If you find housing through websites or advertisements other than the classified ads listed on the OTH AW homepage, do not hesitate to contact the International Office to check if we know the landlord.

We recommend arriving in Amberg or Weiden at least one week before the academic year begins and staying in a hotel for the first few days while you search for a place to live.

OMG! Betriebskostenvorauszahlung. Something with costs?! Einzugsermächtigung, Bankrücklast-What?



Also make sure that before you sign a contract or rental agreement, you understand all of its terms. If you are not sure, ask the landlord if you can take the contract with you for a day and we will help you.

# Pack your bag

## Clothes

When packing for Germany, you will need to plan for all types of weather. From hot summers to rainy autumns, cold winters with snow and changeable springs, you will experience all four seasons. But even if it is summer and warm, the weather in Germany changes abruptly and often, so it is always best to have layers available. Do not forget your rain jacket!

German students dress rather informally when attending lectures. It is usually only during oral exams or presentations that students will dress more formally.

On the back you will find a little checklist of what to pack!



If you are someone who would miss home quite often like me, there's no harm in bringing a small item that would ease that homesickness. This could be a little pillow, a family picture or even your favorite coffee mug.



## Student apartment

In most cases your student apartment will already be equipped with a bed, a mattress, a desk, office chair and a cabinet. If you live in a student dorm or a shared apartment also kitchen equipment will most likely be present. For your bed you will still need bed linen, pillow and blanket.

However we would recommend that you buy most of these locally, to save space in your suitcase.







Throughout Germany and most of the world, electrical power is 220-230 V / 50 Hz. This means that your appliances and electronic devices should work in Germany, but for most countries outside of Europe, you will need to buy an adapter in order to use the electrical outlets. It may be less expensive to buy small appliances (such as hairdryers) here than to carry and adapt incompatible ones.

## Electronics



bag for daily use & traveling

**300€**  
for the first days

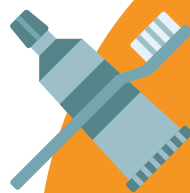


## Medicine



All kinds of medication are available in Germany, but always through a pharmacy. This means you might need a prescription from a doctor more often, except for basic ailments such as colds. Moreover, you might not be able to fill a foreign prescription in Germany, although it is sometimes possible if you come from another EU country. In this case, you can ask your doctor for a 'cross-border prescription.' Please make sure to do some research in advance. Some medications from other countries might not be available in Germany or may be sold under a different name.

## Cosmetics & Toiletries



Cosmetics and toiletries can be found anywhere, from supermarkets to general drugstores. So think of your luggage weight and only take with you what is necessary for the first few days. However if you have any specific products you use on a regular basis, play it safe and bring them with you.



If you're buying a new luggage bag, take note of the weight of the bag itself. Every extra weight counts, so less bag weight means that you have more space for your items!

# Checklist

pack your bag for study abroad in Germany

## Clothing

- Underwear and socks (2 weeks)
- Thermal underwear
- T-Shirts
- Long sleeve shirts
- Short sleeve shirts
- Sweatshirt or hoodie (2-3)
- Sweaters
- Jeans & belt (2-3 pairs)
- Shorts
- Skirts or dress (for the girls)
- Pajamas
- A set of workout clothes
- Swimsuit
- Rain jacket
- At least one nice outfit for formal occasions
- Shoes (Sneakers, boots, rain boots)
- Coat (for cold weather)
- Gloves, hat, scarf

## Extras

- 300€ for first few days
- Purse/ wallet
- Important documents (passport, visa, plane tickets, etc.)
- Outlet adapter
- Sunglasses
- Cell phone and charger
- Laptop and charger
- Camera and charger
- Sheets / bed linen
- Bath towels
- Backpack (for daily use and as your carry while traveling)
- Water bottle
- A few hangers

## Cosmetics & Toiletries

- Shampoo/ conditioner
- Toothbrush/ toothpaste
- Soap
- Deodorant
- Feminine products (one month)
- Brush
- Razors / other shaving supplies
- Glasses / Contact lenses and solution
- Nail clippers
- Makeup

For any questions contact  
the International Office:



<https://www.oth-aw.de/en/inform-yourself-and-discover/facilities/international-office/contact/>

SoSe 2021  
Master Medientechnik & Produktion  
Sta Methoden der Visualisierung  
Daniel Kann